

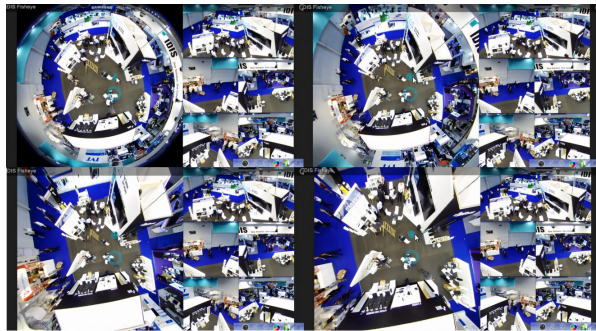
IDIS CENTER

IDIS Center provides customers with plug-and-play management software to install and operate network cameras and network video recorders.

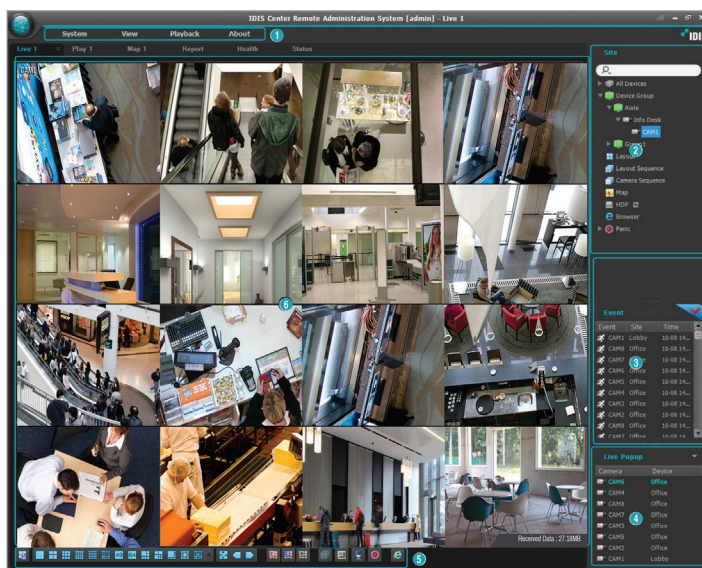
IDIS Center is a central management software solution that supports live monitoring, video playback as well as advanced management tools including event monitoring, e-maps, and condition monitoring of devices.



KEY FEATURES



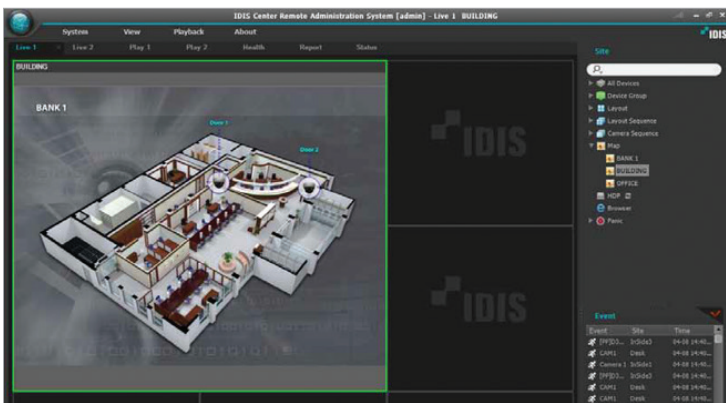
- Remote surveillance of live videos and remote playback of video recordings
- Real-time notification of detected events and remote monitoring of event videos
- Panic recording of live videos and playback of panic recordings
- Registration of up to 1,024 devices
- Simultaneous remote software upgrades and multiple system setup
- Displays device's system logs
- Monitoring live e-map
- SSL support for security
- Authority settings by user groups for security
- Intuitive and user-oriented GUI
- Supports removable HDD (SD card) play
- All live viewing, searches, e-maps, and condition monitoring can be executed simultaneously by displaying distinctly different panels on four different monitors



LIVE VIDEOS

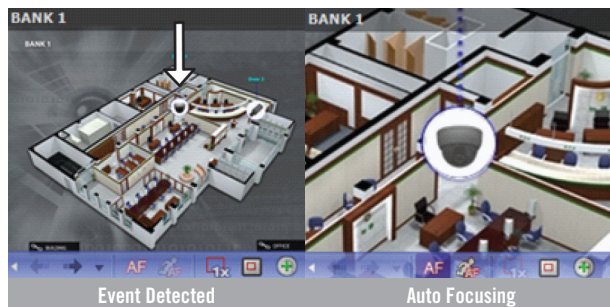
Live videos of registered sites can be monitored. IDIS Center receives videos according to the device's settings and displays live videos. Up to four live panels are supported for monitoring live videos.

- 1 Menu**
Select the menu System, View, Playback, and About.
- 2 Site List**
Used to connect to a registered site using drag and drop.
- 3 Live Event List**
Shows instant events and callback events of registered devices. Click button and then Emergency Event Panel will be displayed.
- 4 Live Popup List**
Shows the list of current popup screens on IDIS Center.
- 5 Panel Toolbar/Timetable**
Shows toolbar or timetable depending on the panel.
- 6 Panel**
Shows videos or list of the selected tab.



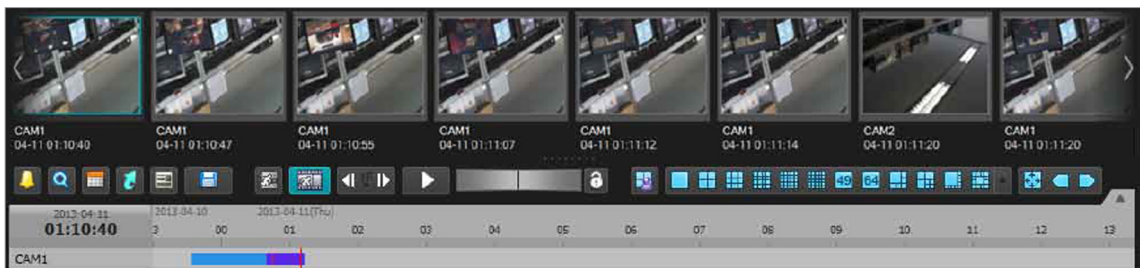
MAP MONITORING

The camera videos of registered devices, events, and status of connection I/O devices can be monitored on a map. Map monitoring supports up to four live panels and map panels.



SNAP SHOT ON MOTION EVENT

When 'Motion Event Freeze-frame' is clicked in the Panel Toolbar, still images of videos recorded during Event Record Dwell (Event and pre-event) are shown in the Play panel. Recording information of the selected freeze-frame is displayed on the timetable. When the user clicks anywhere on the recorded data on the timetable, a freeze-frame image of the selected time is shown. Placing the mouse cursor over the freeze-frame brings up a popup viewer screen above the freeze-frame.



SYSTEM STATUS MONITORING

The system status of registered devices can be monitored in real-time. System status monitoring is supported in the Status panel. If a Status tab doesn't exist in the panel tabs, you can add them by selecting New Tab in the System menu and clicking Health. Once the Health tab is added, the health monitoring results are automatically displayed.

